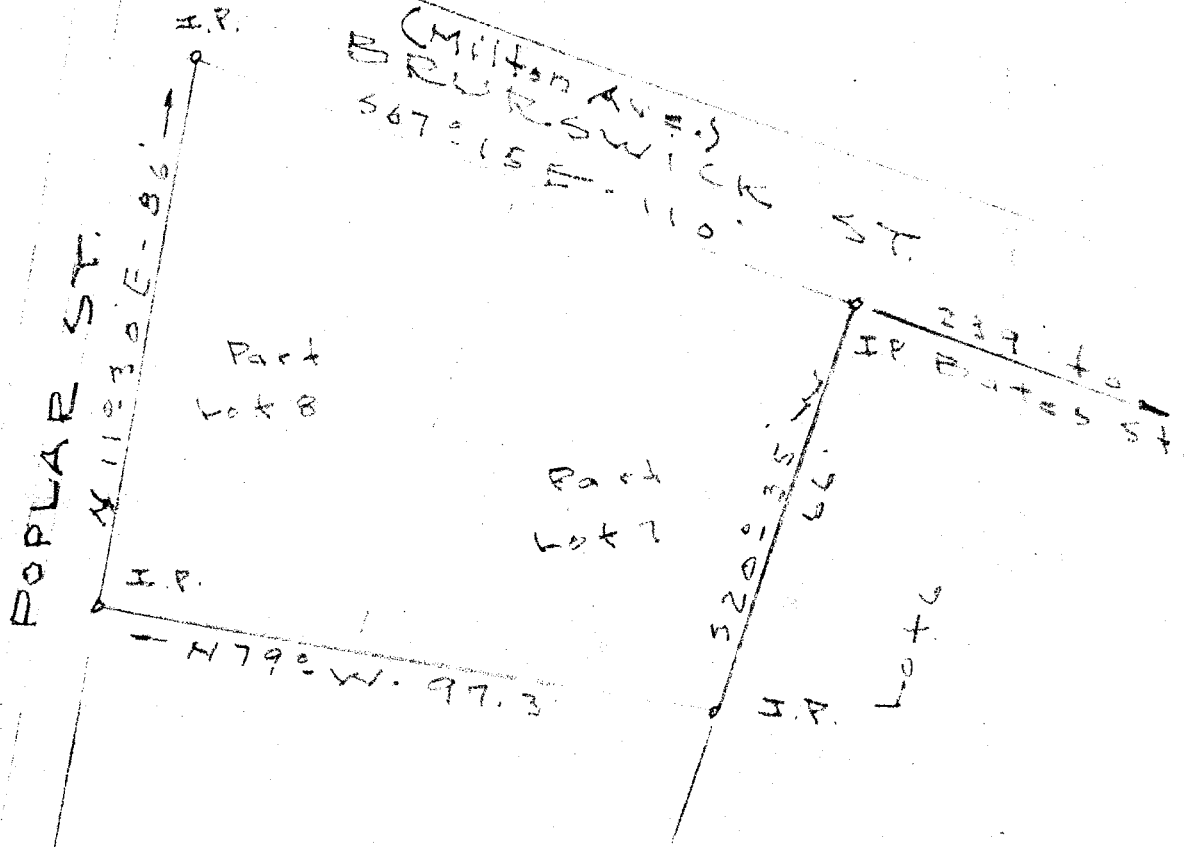
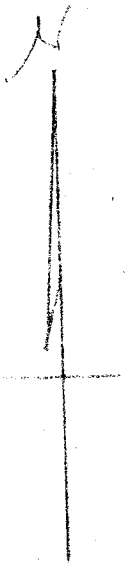


48



PROPERTY OF
A. L. PATTON
 Part Lots - 7 & 8 - Prop. at Harry H. Palm
 Near Greenville - S. C.
 Scale 1" = 30' - Oct - 4 - 55

GREENVILLE CO. S. C.
 OCT 7 10 48 AM 1955
 OLLIE BRINSFORD
 REC'D.

OCT 7 - 1955

26135

Surplus in this block
 Bearings are magnetic.

84 - J.C. Hill - L.S. 805

#26135 Filed This 7 day of Oct 19 55

and Recorded in Vol. 48

Oliver Brinsford

Register Messrs Conveyance Greenville County, S. C.